



# J8L

Smart Simplicity



# J8L

Smart Simplicity

Products, Inc. Model: J8L  
Designed in Miami

Designed in Miami



# J8L

Smart Simplicity



BLU Inc. - Miami  
Model: J8L



## Key Selling Points



5.7" Curved Glass Display  
480 x 960 Resolution  
188ppi



5MP Dual Camera  
+ LED Flash  
2MP Selfie Camera



Face ID



MediaTek Helio A22 | 12nm  
ARM-Cortex A53  
2.0GHz Quad-Core



16GB Internal Storage  
2GB RAM  
MicroSD up to 128GB



2,000mAh  
Battery



Textured-Leather Finish  
Battery Cover



HAC - Hearing  
Aid Compatible



Android 13  
Go Edition



## Pleasing Design

The all-new **J8L** combines detailed design with precise engineering to develop an exceptional smartphone. With a matte metallic paint finish and leather-inspired pattern, it is sure to be a conversation starter wherever you go.

Available in Burgundy, Grey, Nordic Blue, Ultra Green and Viva Magenta.



BLU Products, Inc. Model: J8L  
Designed in Miami

# Amazing Display

Get ready to immerse yourself in vivid colors like never before with the **J8L**'s stunning 5.7" display. Whether you're binge-watching your favorite shows on the go or simply scrolling through your feed, this smartphone brings every image to life with breathtaking clarity and vibrancy.



**J8L**

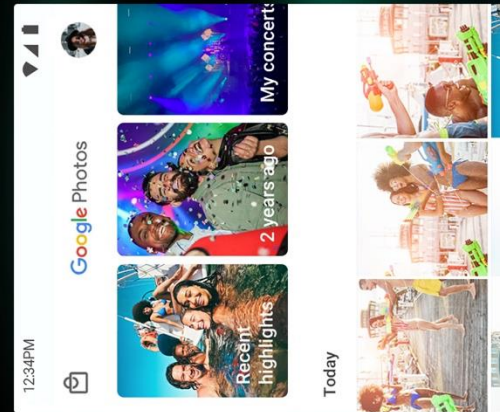
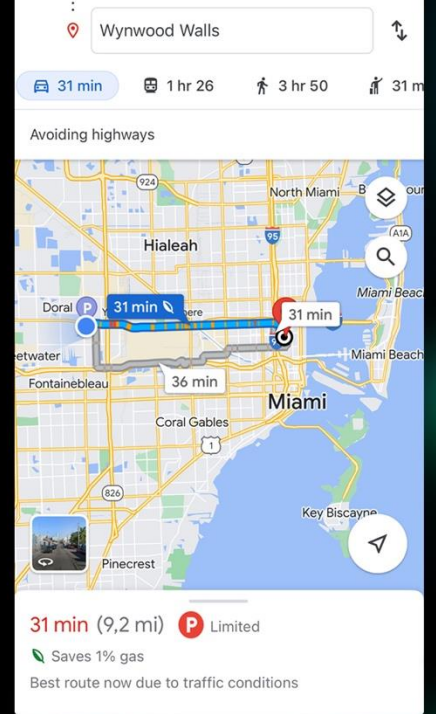
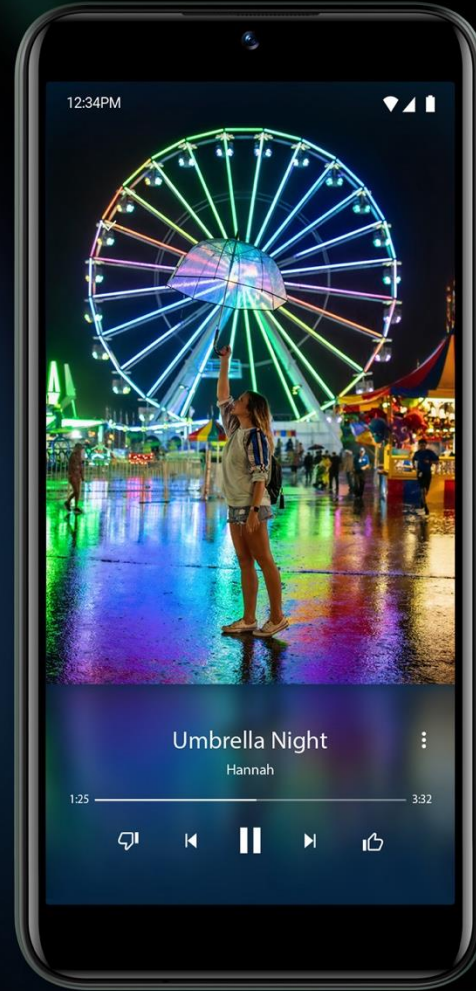
**BLU**  
smartphones | **B**



# Powerful Quad Core

Experience blazing-fast performance as you breeze through all your tasks with the powerful and efficient Mediatek Helio A22, 2.0GHz Quad-Core processor, complemented by a large ARM Cortex-A53 core.

**MediaTek Helio A22**  
**2.0GHz Quad-Core Processor**  
**16GB Storage | 2GB RAM**



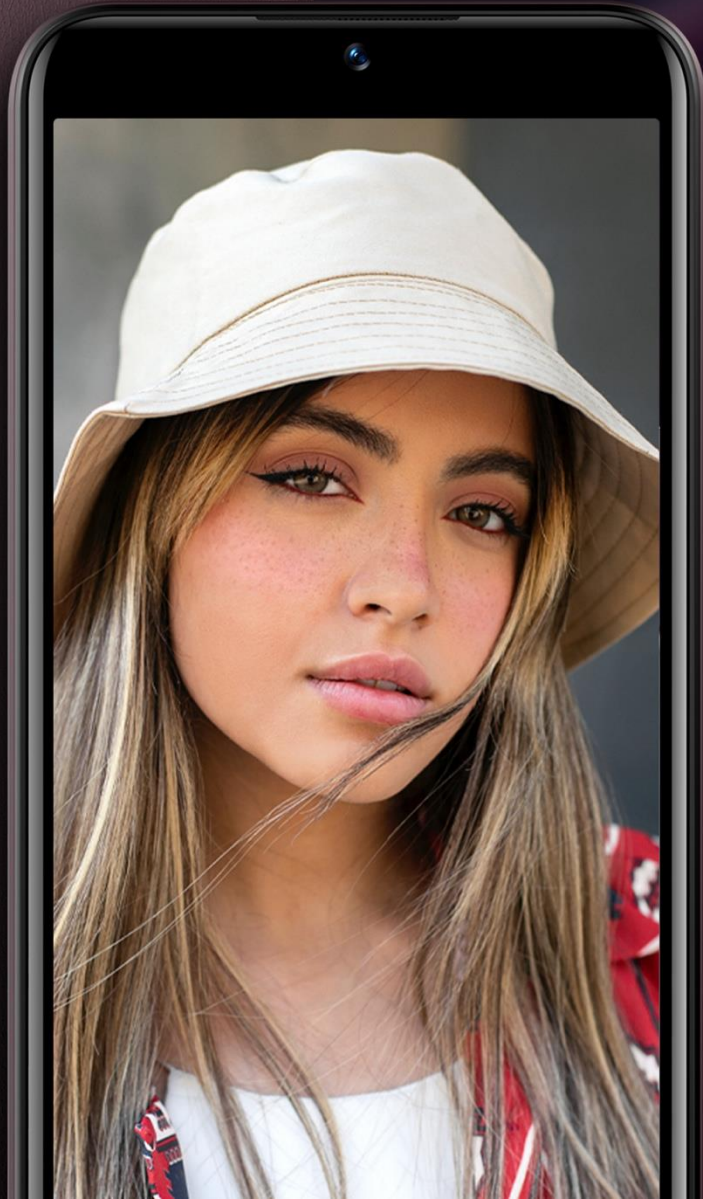
JBL

**BLU**  
smartphones



# J8L

BLU Products, Inc. Model: J8L  
Designed in Miami



## Collect Memories

Preserve your precious memories with the **J8L 5MP camera**. This smartphone allows you to capture all your favorite moments with stunning clarity and detail.

**5MP Dual Camera + LED Flash**  
**2MP Selfie Camera**



# Unlock Your World

With just a quick facial scan, you can conveniently access your device. Say goodbye to passwords and hello to seamless phone use with the **JBL's** Facial Recognition.



JBL

BLU  
smartphones



# 13

## Android 13 (Go Edition)

The **J8L** runs on the Android 13 (Go Edition) operating system, specifically designed to power affordable smartphones with top-of-the-line features. This latest update emphasizes reliability, usability, and customization, ensuring that your **J8L** always delivers optimal performance and an unparalleled user experience.

**J8L**





J8L	848958043294	J0170UU	BLUE
J8L	848958043300	J0170UU	GREY
J8L	848958043317	J0170UU	GREEN
J8L	848958043324	J0170UU	BURGUNDY
J8L	848958043331	J0170UU	RED

<b>Technology</b>	GSM: Quad Bands 3G: 850/1700/1900 LTE: 2/4/5/12/17/66/71
<b>Display</b>	5.7" Curved Glass 480 x 960 Resolution   188ppi
<b>Processor</b>	MediaTek Helio A22   12nm ARM Cortex A53 2.0GHz Quad-Core
<b>Storage</b>	16GB Internal Storage 2GB RAM MicroSD up to 128GB
<b>Camera</b>	Dual 5MP + LED Flash 2MP Selfie Camera Video Capture 720@30fps
<b>Battery</b>	2,000mAh
<b>Security</b>	Face ID
<b>Connectivity</b>	Bluetooth v5 Wi-Fi (a/b/g/n/ac) HAC Rating: M3/T3 USB Type-C
<b>Operating System</b>	Android 13 (Go Edition)

Contents Pending