

G51 PLUS

KEEP IT MOVING





G51 PLUS

KEEP IT MOVING

G51 PLUS

KEEP IT MOVING



BLU Products, Inc. Model: G51 PLUS
Designed in Miami

G51 PLUS





KEY SELLING POINTS



**6.5" HD+ 20:9
INFINITY DISPLAY**



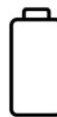
**TRIPLE A.I 13MP MAIN
+MACRO + DEPTH SENSOR
8MP SELFIE CAMERA**



**1.6GHZ OCTA-CORE
PROCESSOR | 64 BIT**



INTERNAL MEMORY
• 64GB + 4GB RAM
• 64GB + 3GB RAM



4,000 MAH BATTERY



FINGERPRINT SENSOR



ANDROID 11

G51PLUS

DESIGN

Gorgeous colors and a perfect form factor, the G51 PLUS stands out from the rest. Gradient pattern design that is sure to blow away the competition.

Available in Red, Black, Gradient Blue and Gradient Green.



SUPER DISPLAY

Enjoy all your movies and picture with the captivating 6.5" HD+ Infinity Display.
With a 20:9 ratio, you get maximum screen space on the G51 PLUS.



G51PLUS

1.6GHz
COMPUTING POWER

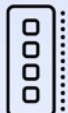
CPU

PROCESSOR

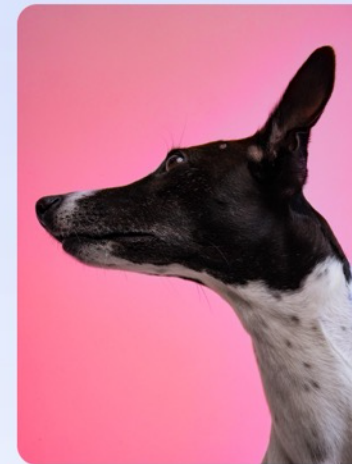
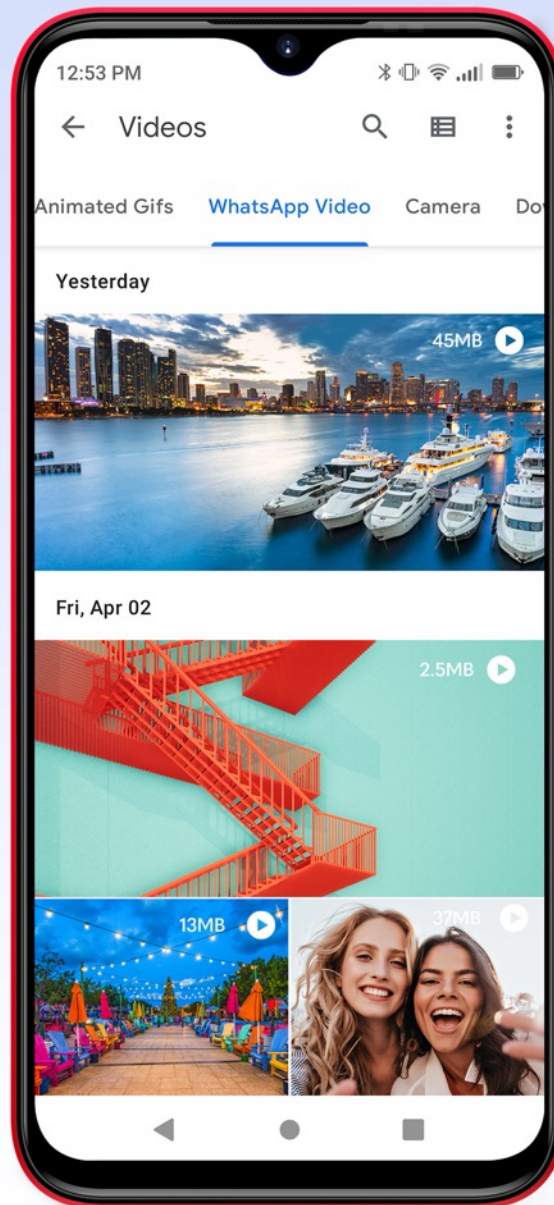
Breeze through all your apps with octa-core speed with 1.6GHz computing power, flawless performance for all your daily task.

EXPANDED STORAGE

When you need storage space and smooth multitasking, the G51 PLUS will not disappoint.



64GB + 4GB RAM
64GB + 3GB RAM





TRIPLE CAMERA

Ever come up on moments when you wish to capture that perfect image? For sure and the G51 PLUS is the perfect camera to handle the job. Triple A.I camera setup with smart scene mean you will capture the perfect image.

- ① 13MP MAIN
- ② +5MP
- ③ +DEPTH SENSOR

FINGERPRINT SENSOR

Unlock your G51 PLUS with the touch of a finger. Keeps all your files and information secure and private.



SUPER BATTERY

The G51 PLUS provide all the power you need with a 4,000mAh capacity. Enjoy all day usage without any disruption.



4000mAh

ANDROID 11



FAMILY LINKS



SMART REPLY



SOUND
AMPLIFIER



DARK THEME



PRIVACY
CONTROLS



LOCATION
CONTROLS



FOCUS MODE



GESTURE
NAVIGATION



SECURITY
UPDATES

SPECIFICATIONS



GSM QUAD-BAND
3G: 850/900/1700/1900/2100
LTE: 1/2/3/4/5/7/12/17/28



1.6GHZ OCTA-CORE I 64 BIT
IMG 8322 GPU



64GB INTERNAL MEMORY
• 4GB RAM
• 3GB RAM
MICROSD UP TO 64GB



6.5" HD+ 20:9
INFINITY DISPLAY
720 X 1600 RESOLUTION
270PPI



TRIPLE A.I 13MP MAIN
+MACRO + DEPTH SENSOR
8MP SELFIE CAMERA
VIDEO CAPTURE 1080P@30FPS



4,000MAH
BATTERY



BLUETOOTH 4.1
WI-FI (B/G/N)
HOTSPOT



FINGERPRINT
SENSOR



ANDROID 11

G51 PLUS	848958040439	G0510WW	BLACK
G51 PLUS	848958040446	G0510WW	BLUE
G51 PLUS	848958040453	G0510WW	GREEN
G51 PLUS	848958040460	G0510WW	RED



G51 PLUS

165 X 76.5 X 9.3MM | 200G

✓ ANDROID 11

1.6GHZ OCTA-CORE PROCESSOR

✓ 64GB INTERNAL MEMORY | 4GB RAM | 3GB RAM

6.5" HD+ 20:9 INFINITY DISPLAY

720 X 1600 RESOLUTION | 270PPI

✓ TRIPLE 13MP + MACRO + DEPTH SENSOR WITH LED FLASH

✓ 8MP SELFIE CAMERA

✓ FINGERPRINT SENSOR

4,000MAH BATTERY



XIAOMI REDMI 9A

164.9 X 77.1 X 9MM | 196G

ANDROID 10

1.7GHZ OCTA-CORE PROCESSOR

32GB INTERNAL MEMORY | 2GB RAM

6.5" HD+ 20:9 V-NOTCH

720 X 1600 RESOLUTION | 269PPI

13MP WITH LED FLASH

5MP SELFIE CAMERA

NA

5,000MAH BATTERY



G51 PLUS

165 X 76.5 X 9.3MM | 200G

✓ ANDROID 11

1.6GHZ OCTA-CORE PROCESSOR

✓ 64GB INTERNAL MEMORY | 4GB RAM | 3GB RAM

6.5" HD+ 20:9 INFINITY DISPLAY

720 X 1600 RESOLUTION | 270PPI

✓ TRIPLE 13MP + MACRO + DEPTH SENSOR WITH LED FLASH

✓ 8MP SELFIE CAMERA

✓ FINGERPRINT SENSOR

4,000MAH BATTERY



SAMSUNG GALAXY M02

164 X 75.9 X 9.1MM | 206G

ANDROID 10

1.5GHZ QUAD-CORE PROCESSOR

32GB INTERNAL MEMORY | 3GB RAM

6.5" HD+ 20:9 V-NOTCH

720 X 1600 RESOLUTION | 270PPI

DUAL 13MP + 2MP WITH LED FLASH

5MP SELFIE CAMERA

NA

5,000MAH BATTERY

BOX



PHONE



GLASS SCREEN
PROTECTOR



CASE



QUICK GUIDE



STICKER



CHARGER



MICRO USB CABLE